

DISASSEMBLY OF THE PS2

Disclaimer:

Please keep in mind that these instructions are for your benefit and in no way cover you if in following them you damage your station. No responsibility will be taken by the author of this document, for any damage caused by someone incorrectly interpreting the steps indicated within.

VERSIONS V4 30002 / 35002, V5 & 6 30002 'R' & V7 39002.

Introduction:

Version 4 onwards of the PS2 are to put it simply, rather awkward to pull apart. The process took a couple of hours the first time I personally attempted it.

With the aid of these instructions, I hope to make the process a much shorter and less stressful task for any one else attempting it. On the upside, it now takes less than 5 minutes.

Instructions:

The following pictures will provide a step-by-step guide, on how to safely disassemble PS2 30002 to 39002R stations. (there are some small variations between the models but no major ones).

Step 1:

Remove the 4 little plastic covers and the 4 little rubber feet from the base of the station. Beneath these covers, you will find 8 screws. Remove all 8.



Step 2:

There is a warranty sticker, along the edge of the station, which needs to be removed or cut in order to open the station's cover. This will obviously void your warranty in Sony's eyes.



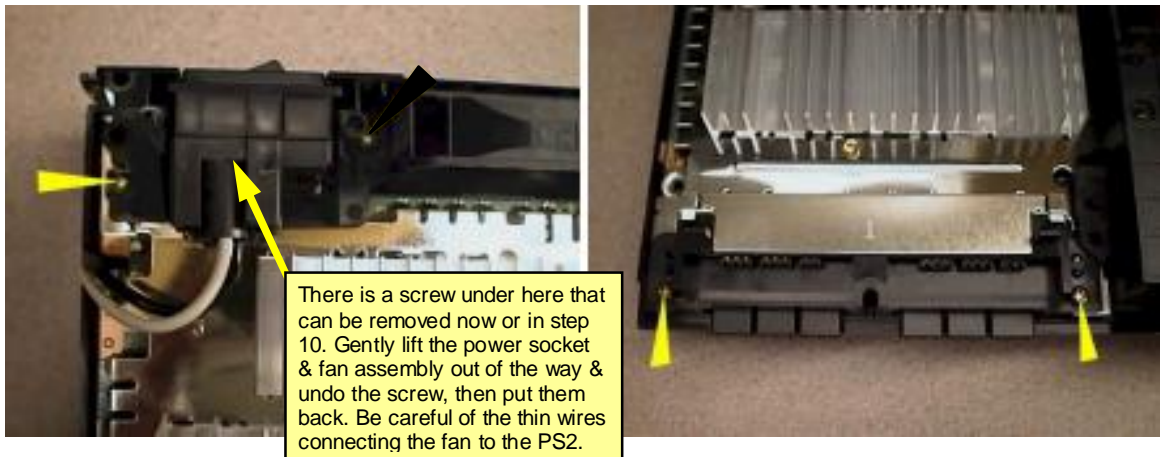
Step 3:

Carefully open the case of the PS2. There will be a small 'fragile' ribbon cable connecting the reset and eject buttons on the case to the circuit board. This can either be disconnected for safety or if you are not 100% sure you are would be able to re-connect it you can leave it attached but care will need to be taken so as not to damage it as you continue on through this process.



Step 4:

Once the case has been opened, it is time to start removing the large number of screws that prevent access to the PCB area you will need to get access to.



Step 5:

With the screws removed from the sections indicated above, you can now remove the joystick and memory card slots (I personally leave them in). Below is how the station looks with this unit removed.

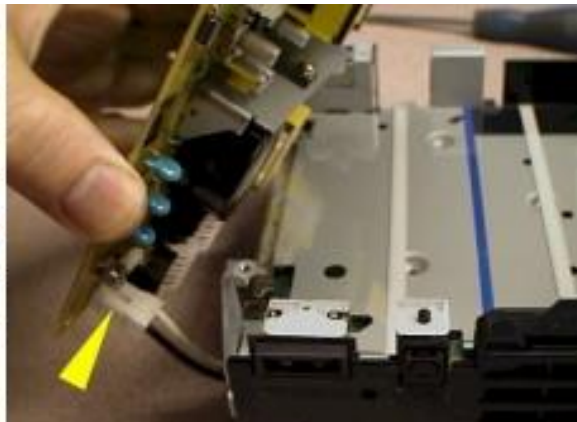


Step 6:

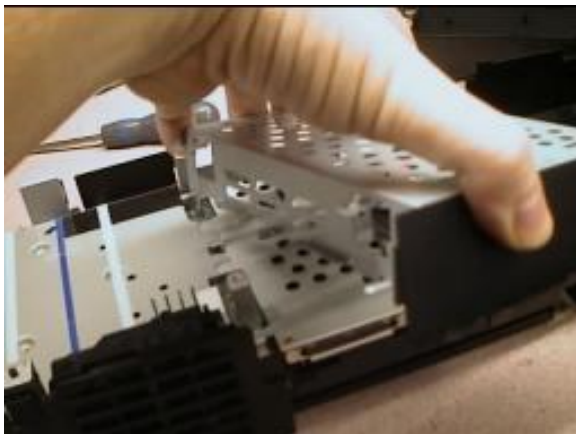
Carefully turn the station up the other way and remove the remaining section of the black plastic casing.

**Step 7:**

The next step is to remove the 4 screws holding down the power supply. When lifting this section of the PCB away, take care of the cable connecting it with the socket on the fan unit. This will need to be disconnected.

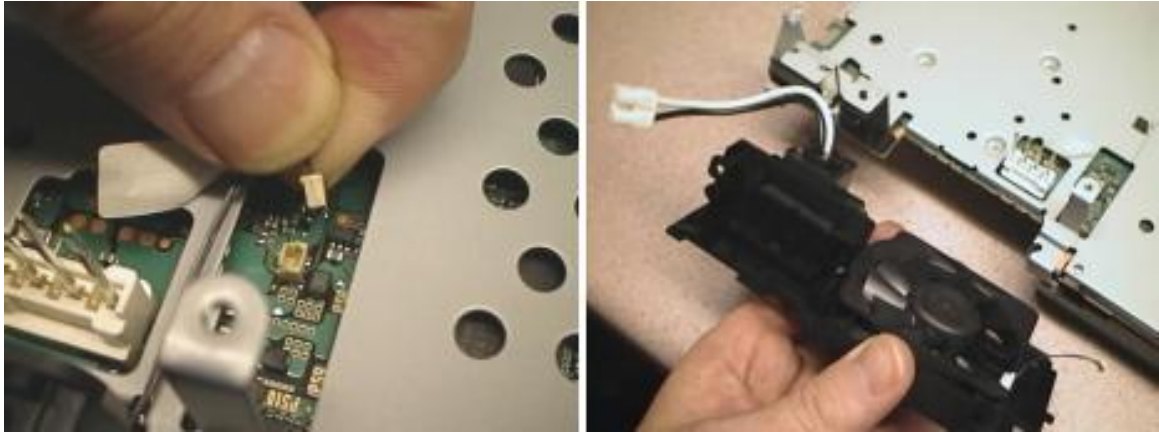
**Step 8:**

Now remove the hard drive bay and the clear plastic protective cover. Make sure to take note of how this plastic cover fits into place, as it is designed to prevent shorts when the PS2 is powered.



Step 9:

There is a small piece of white tape across the fine wires that power the fan. This tape needs to be peeled back in order to free the wires and allow the little white connector to be disconnected from the main PCB. This needs to be done with care as the wires are very thin and could be damaged if too much force is exerted on them.



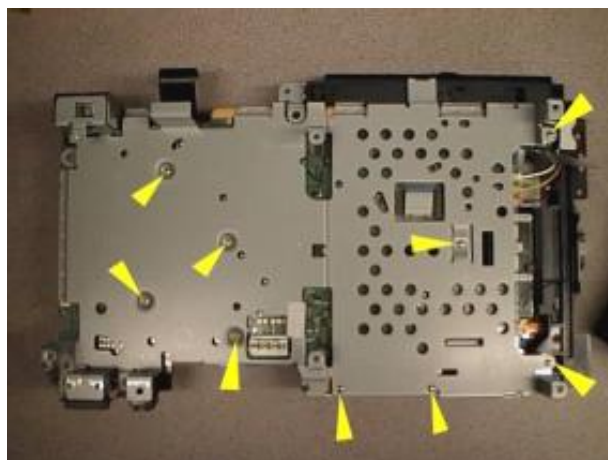
Step 10:

There is a well-hidden screw located on the under side of the metal sheeting. This needs to be removed to move on to the final step. (unless you did so already in step 4.)



Step 11 – the final step:

All that now stands between installing the single wire on the PCB to get the solution working is a number of small screws. The finale diagram shows the last screws that need to be removed:



VERSION 30002

Introduction:

This version of the PS2 is extremely simple!

Instructions:

The following pictures will provide a step-by-step guide, to how one can safely disassemble a PS2 30002 station.

Step 1:

Remove the 2 little plastic covers and the 4 little rubber feet from the base of the station. Beneath these covers, you will find 6 screws. Remove all 6.



Step 2:

Peel the warranty sticker off as with "step 2" for the 30002 R version. Lift the plastic base off by pulling it carefully upwards and tilting it towards the USB ports. The PCB area where the wire needs to be connected to is immediately exposed. The finale task required, is to very carefully disconnect the ribbon cable, to expose one of the connection points as shown below.

